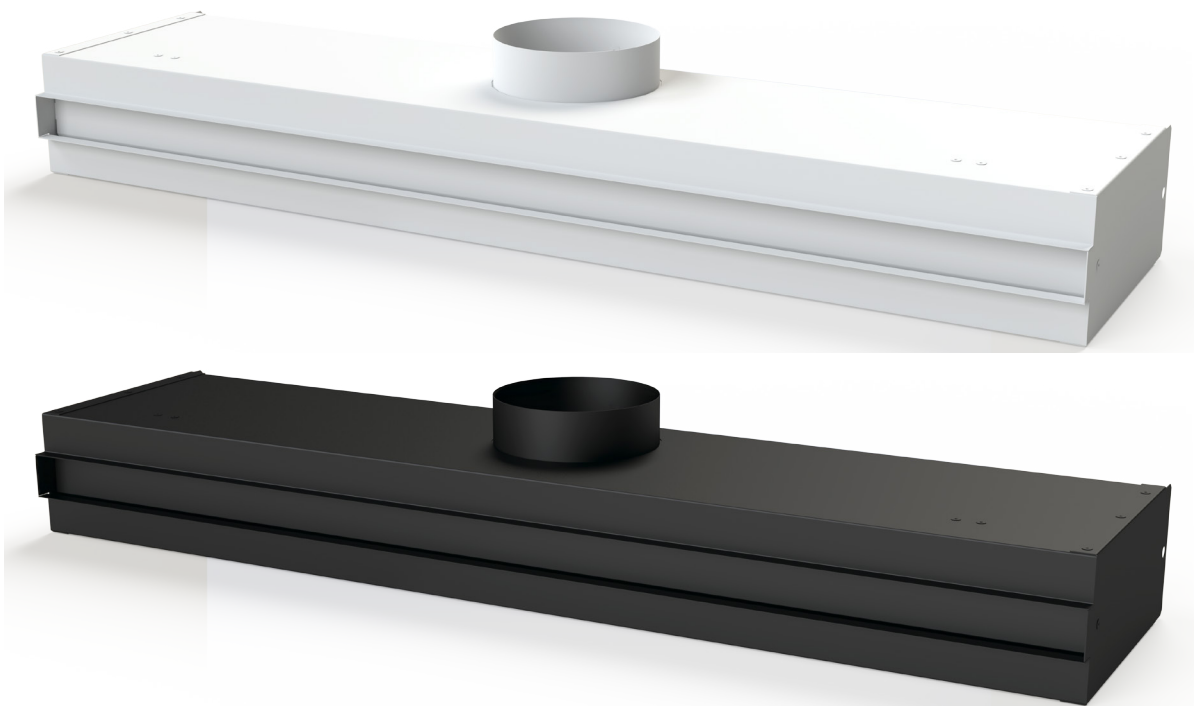


SINGLE SLOT LINEAR DIFFUSER

DL.PL



CONSTRUCTION FEATURES

The single slot linear diffusers with retractable perimeter frame of the DL.PL series are generally installed in confined spaces with a height between 2.7 and 4.0 m and designed for systems operating with temperature differences of ± 10 K between ambient air and supply air. The most frequently used installation is flush with plasterboard, with ceiling (with vertical throw) and wall (with horizontal throw) installation. In the case of the wall, if the distance between the upper edge of the diffuser and the ceiling is less than 200 mm, a coanda effect is obtained; otherwise, a free throw is obtained.

The DL.PL series consists of a single body (diffuser and plenum box), guaranteeing a great advantage for installation, with reduced installation times.

The retractable perimeter frame, designed to facilitate positioning above plasterboard, makes the DL.PL series highly appreciated by designers who find not only plant functionality but also a furnishing motif. They can be used for both supply and return and in variable flow systems in the 50... 100% range. In special execution, they can be mounted one after the other in order to form continuous strips able to follow the ideal line of the room perimeter.

Versions:

- DL.PL.40: with 40 mm slot
- DL.PL.60: with 60 mm slot

FIXING

Concealed fixing on plasterboard with eye bolts on the plenum heads

MATERIAL

The DL.PL diffuser consists of a plenum box inside which an adjustable deflector is placed.

- Plenum box equipped with lateral circular connection in painted galvanized steel sheet RAL 9005 (o 9016).
- Deflector in painted galvanized steel sheet RAL 9005 (o 9016).
- Possible external insulation in CE polyethylene foam (Euroclass of reaction to fire, according to the standard UNI EN 13501-1:2009, B-s2, d0).

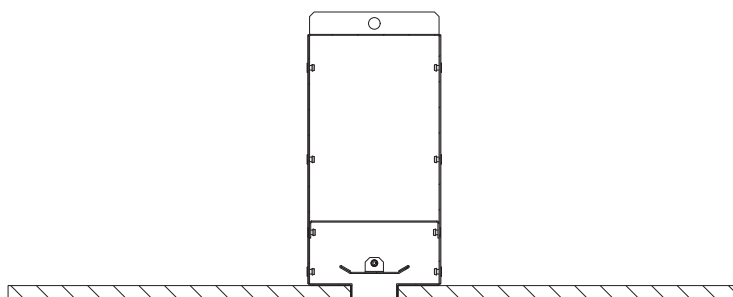
ACCESSORIES



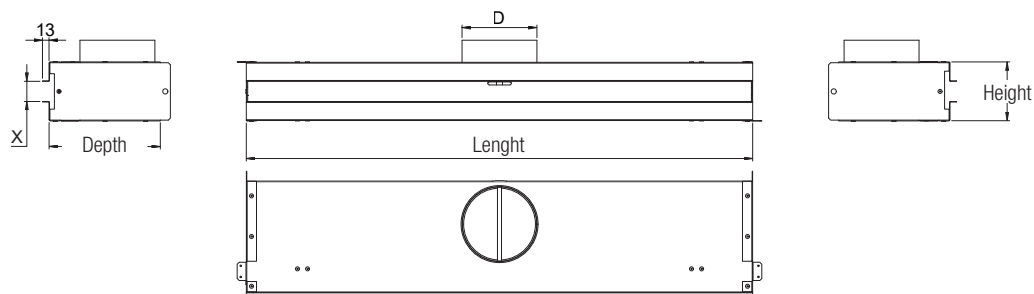
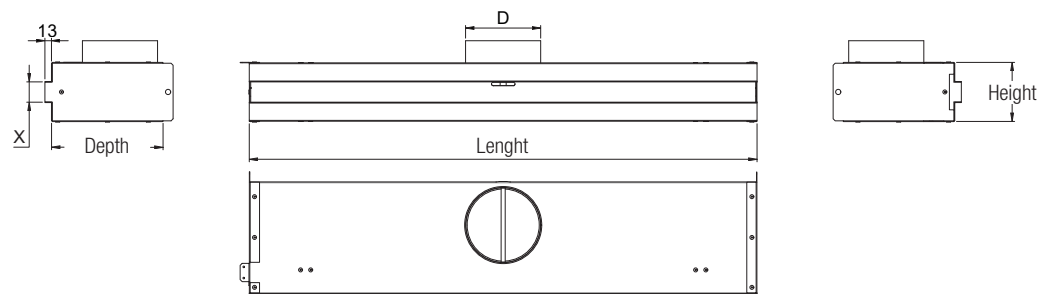
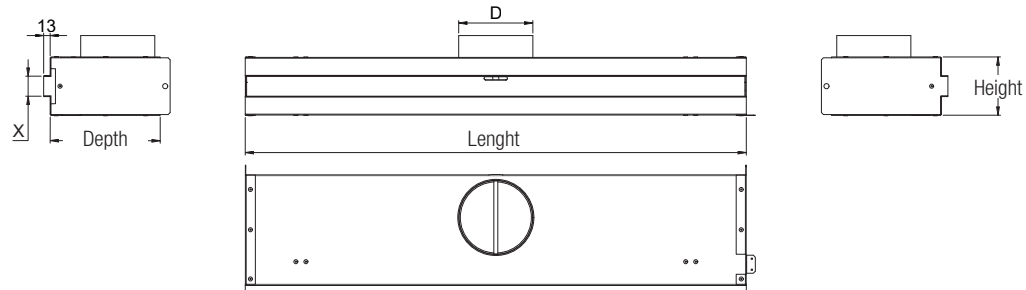
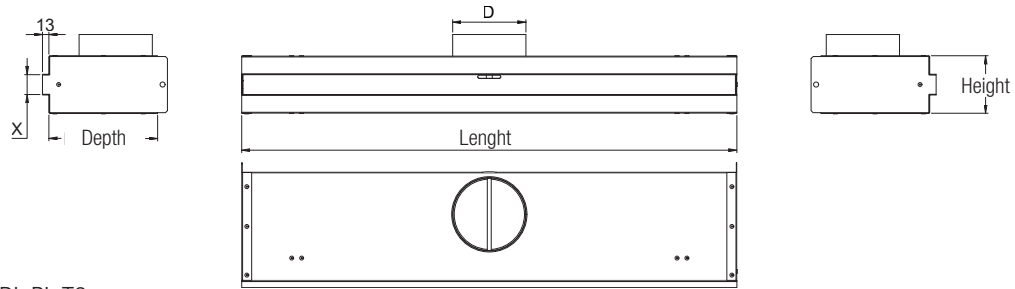
SER.DL.PL

Regulation damper on circular connection, which can be operated from the front of the diffuser

SECTION



DIMENSIONS



X=40

X=60

DL.PL.40	Lenght	Height	Depth	n° of	Inlet Ø
	mm	mm	mm	inlets	mm
	500	115	220	1	150
	750	115	220	1	
	1000	115	220	1	
	1250	115	220	2	

DL.PL.60	Lenght	Height	Depth	n° of	Inlet Ø
	mm	mm	mm	inlets	mm
	500	135	220	1	150
	750	135	220	1	
	1000	135	220	1	
	1250	135	220	2	

PLENUM HEADS



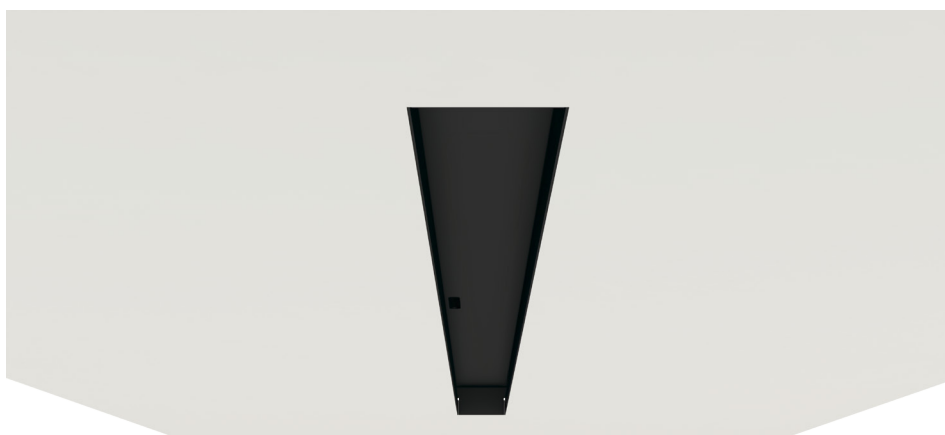
The particular configuration of the heads in the T1 and NT versions allows rapid positioning of the DL.PL diffuser, ensuring the possibility of having continuous strips able to follow the ideal line of the room perimeter.

FIXING

Positioning on plasterboard



Final result - Black



Final result - White



TECHNICAL DATA

Quick selection table

Model	L	Qmin		Qmax		L _{WA} min	L _{WA} max	Δpmin	Δpmax
	mm	l/s	m ³ /h	l/s	m ³ /h	dB(A)	dB(A)	Pa	Pa
DL.PL.40	1000	35	130	125	450	<20	33	<10	68
DL.PL.60	1000	53	190	194	700	<20	35	<10	72

Q air flow rate per diffuser per linear metre

L_{WA} A-weighted power sound level, correction in compliance with UNI EN ISO 3741

Δp static pressure drop

Free passage area

A_{eff} in m² per L = 1000mm

Model	Throw		
	horizontal	oblique	vertical
DL.PL.40	0,024	-	0,024
DL.PL.60	0,039	-	0,039

THE THROW IS ONLY HORIZONTAL FROM THE WALL OR VERTICAL FROM THE CEILING.

AERAUIC DATA - Pressure drop - Power sound level

